



### Preparation

If you are a beginner to paper modeling please read the „Building Tips.pdf“ file to learn what is required to build paper models safe and easy.

Before you begin, make sure you read the instructions so you understand how to build the model and all the options. Also have a look at the PDF files to understand the layer structure.

Figure out the following questions.

- Which color/texture version do you want?
- Do you want a pristine, new look or a weathered, aged look using the dirt layer?
- Do you want special decorative details?

Then decide which version you want to build and find the required pages with the required layers turned on to build.

Before printing double check that you have the layers turned on that make the texture looks like you want it, to avoid printing pages that you will not use and waste printer color.

You can turn off the copyright layer to avoid problems with registration marks on auto-cutters.

In the building instructions you will find images that have **edged** parts. This is a way of hiding ugly white paper edges by coloring them manually with felt pen or similar and is described in the „Building Tips.pdf“.

I hope you enjoy this model set and encourage you to ask for assistance if you need help via my website, facebook or eMail.

Good luck,  
Chris

### Dark Age Handcart





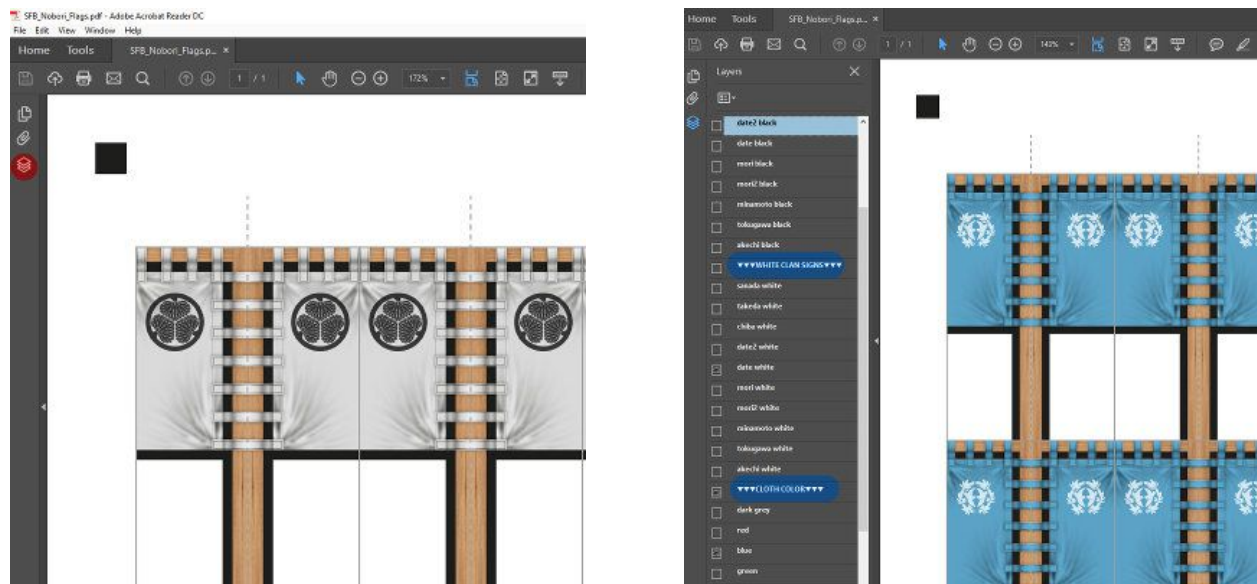
## Layers

This set includes different layers to allow for customization of your prints.

To see the layers you need to click on the *red* layers icon. Each layer can be toggled on or off with a click in the little rectangle. If an eye symbol is showing the the layer will be printed. If the rectangle is empty then the layer is hidden.

If there is a large number of layers I have organized them with the *blue* marked layer groups (in capital letters and an arrow down indicating the following layers belong to this group). This group layer has no content and is just there to help you find layers better.

*Always check the preview window to make sure the layers are setup the way you want before you print!*



(sample screen shots from nobori flag set)

## Lines explained

**Solid lines** are **cut lines** (on the cut layer).

**Dotted lines** are to **fold/bend** and **dash-dotted lines** are for **reverse fold/bend** (on the fold layer).

As I recommend turning off the fold layer, so no dotted lines are visible on the textures, I have an **extra „fold hints“** layer that will show where folds should occur around the parts.

Double check with the step-by-step instruction pictures to see how each part should be folded.

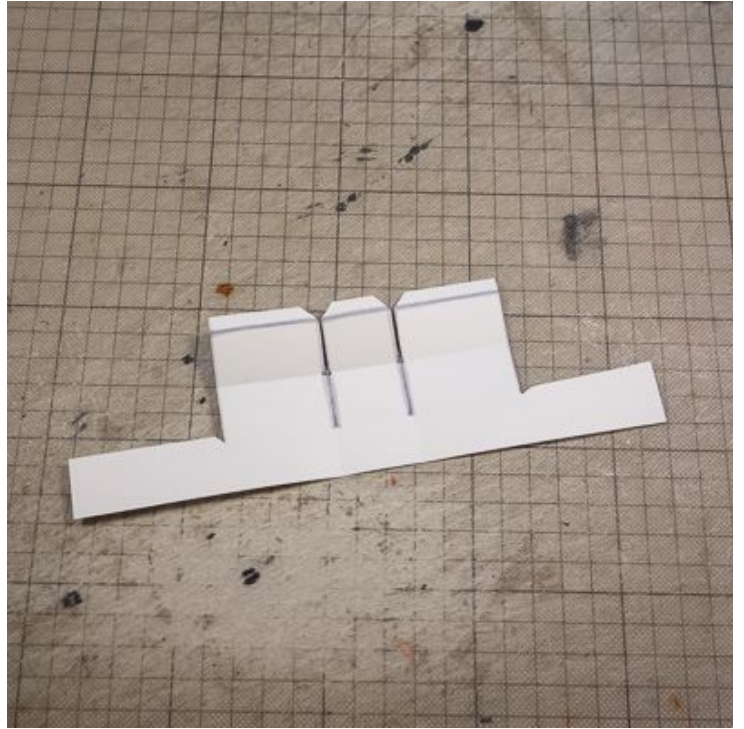
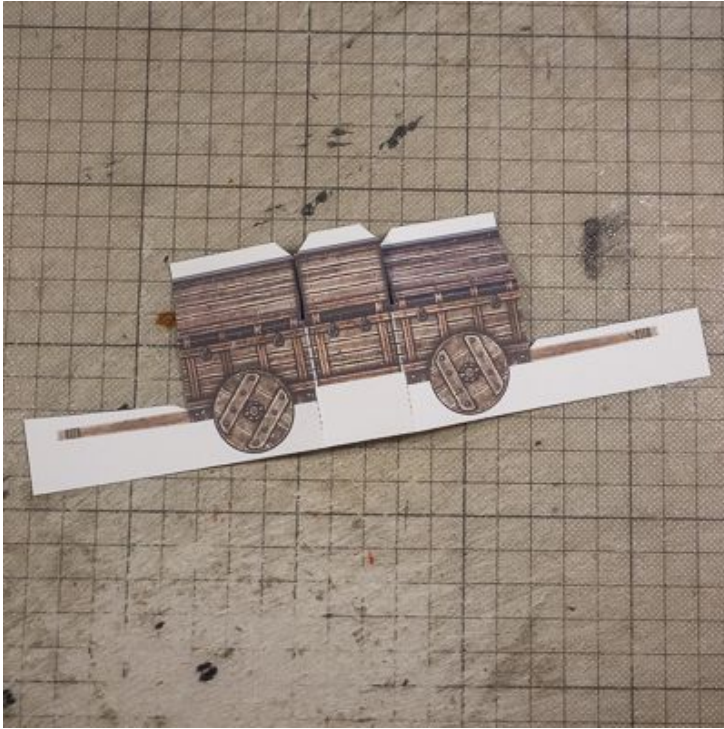


### Layer names

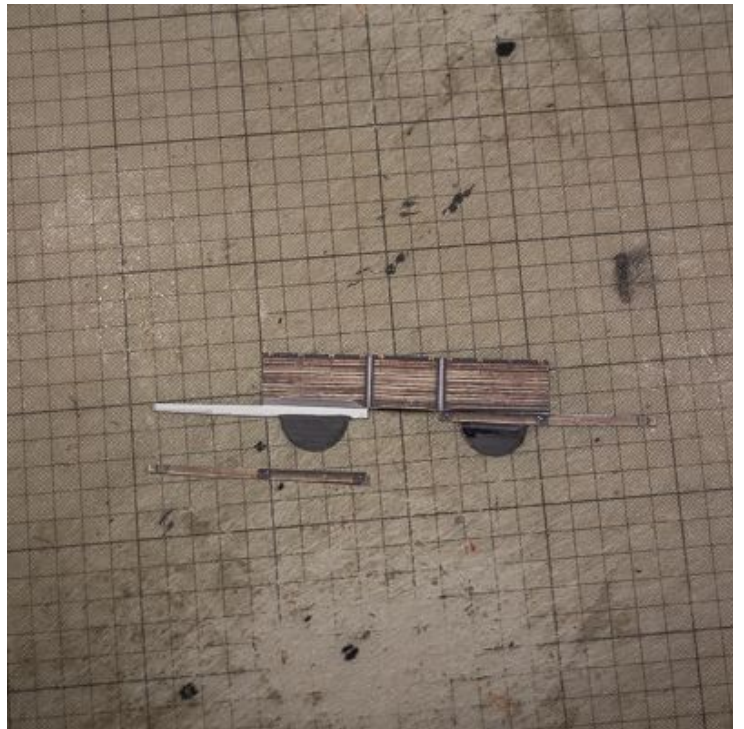
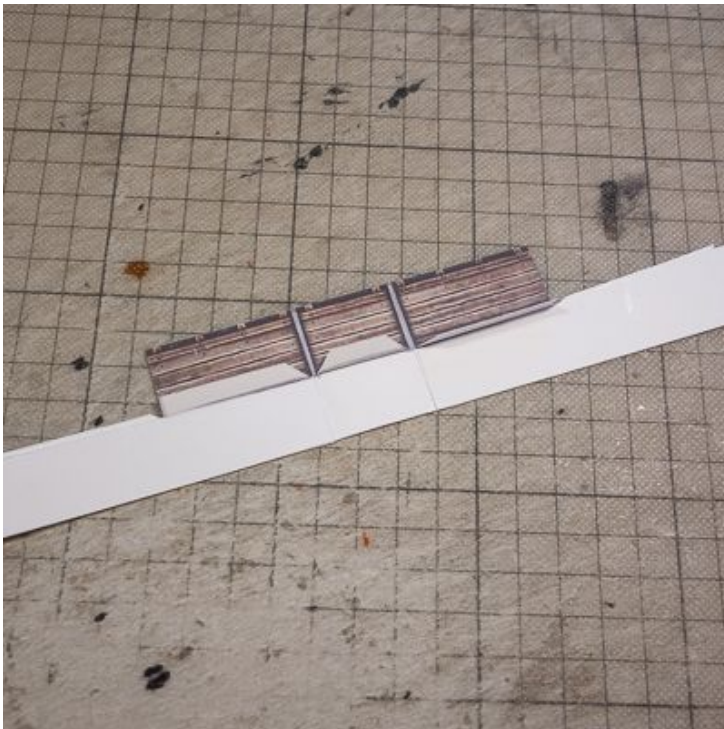
labels	indicating which paper weight to use and other comments
Slots	Indicator to cut slots to attach modules with paper clips
cut	cut lines
fold	score lines ( <i>see also fold hints below!</i> )
dirt	weathering and aging effects
bleached, lighter, darker, warmer, cooler	general color modifiers (combineable)
Base	Basic skin = Viking (wood) walls and roof
Fold hints	When you turn off the fold layer for clean textures, use this layer to help where to fold parts
Copyright	Copyright notice
(SD) Registration marks	Registration marks for Silhouette Autocutter



**Cart**



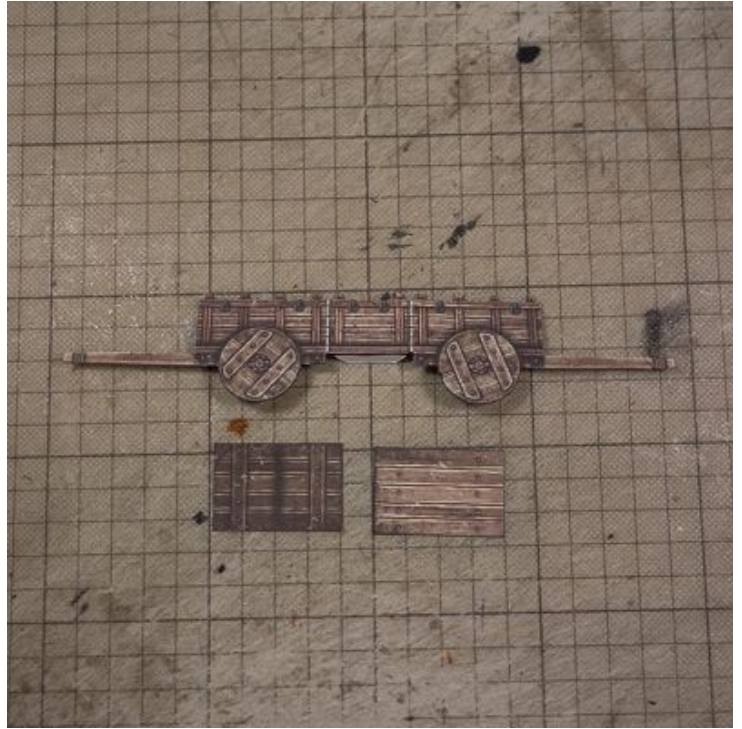
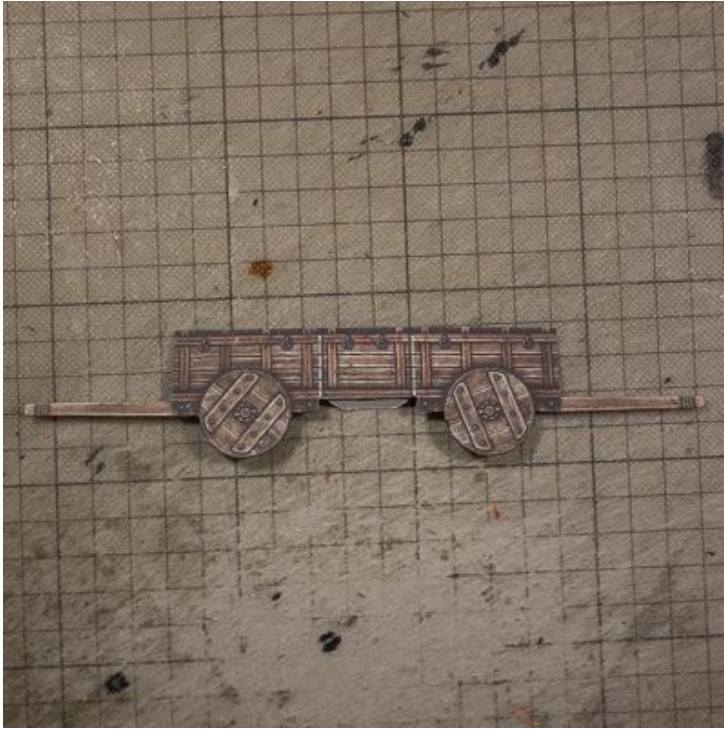
Prepare the main part and don't forget to color where white could show!



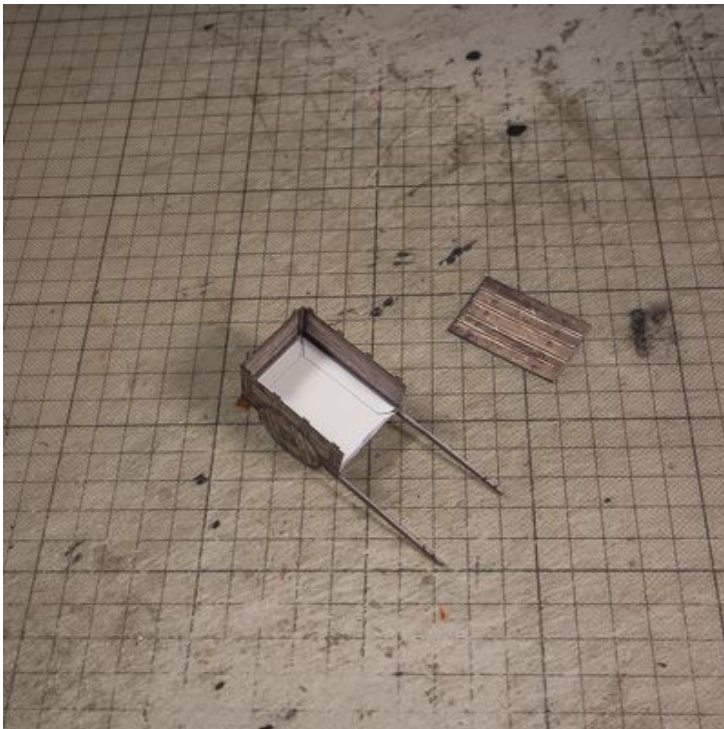
Fold and glue the inner tags to the outside. Next I recommend coloring the inner wheel and then glue the inner handle parts on.



**Straight wall extending roof**



Prepare the cart floor parts (top and bottom side)



Glue the bottom part on first. Then dry fit and trim the top part before gluing it in place. I use a little help to make sure they dry well.



### Roof side extending roof



For a little advanced version double up the extra wheels onto stronger paper and glue to the sides. I like to color some paper grey and cut a thin strip off. Then glue that on around the wheel.



Another advanced tip is to not only color white edges but also simulate patterns with edge coloring. Here I have used a thin black pen to draw the dark space lines between the wooden planks on the edges.





Check out more of my models on these sites.



PATREON |

<https://www.patreon.com/papierschnitzel>

... for free and Patreon-only advanced „basicbits“, small scatter terrain paper models like crates, barrels and much more.  
*Also Patreons receive special offers on new model sets!*



<https://gumroad.com/papierschnitzel>

... for my DELUXE sets including bonus layers and parts as a reward for loyal customers.



<https://www.drivethrurpg.com/browse/pub/9531/Papierschnitzel>

... for all my paper model terrain sets plus some P.W.Y.W. (pay what you want) freebies.